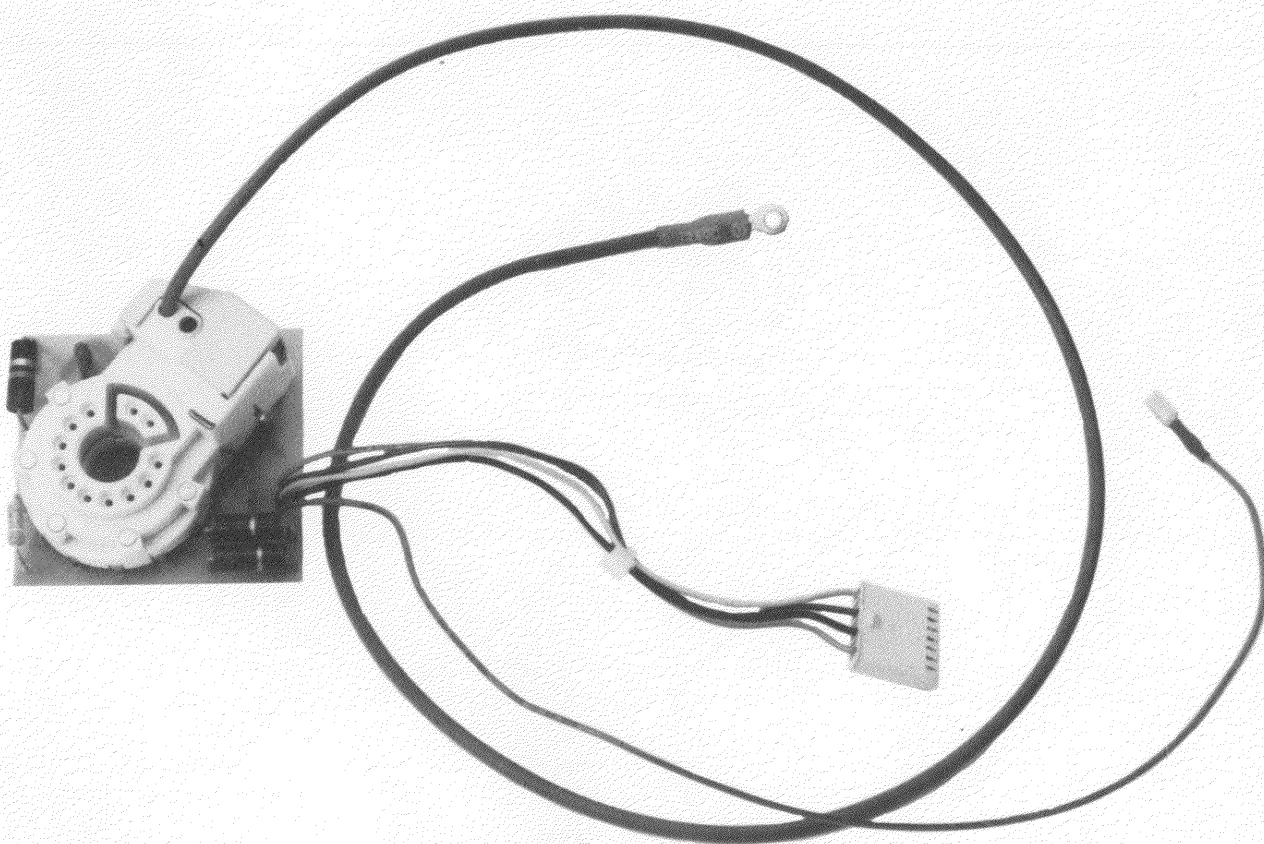

CRT SOCKET

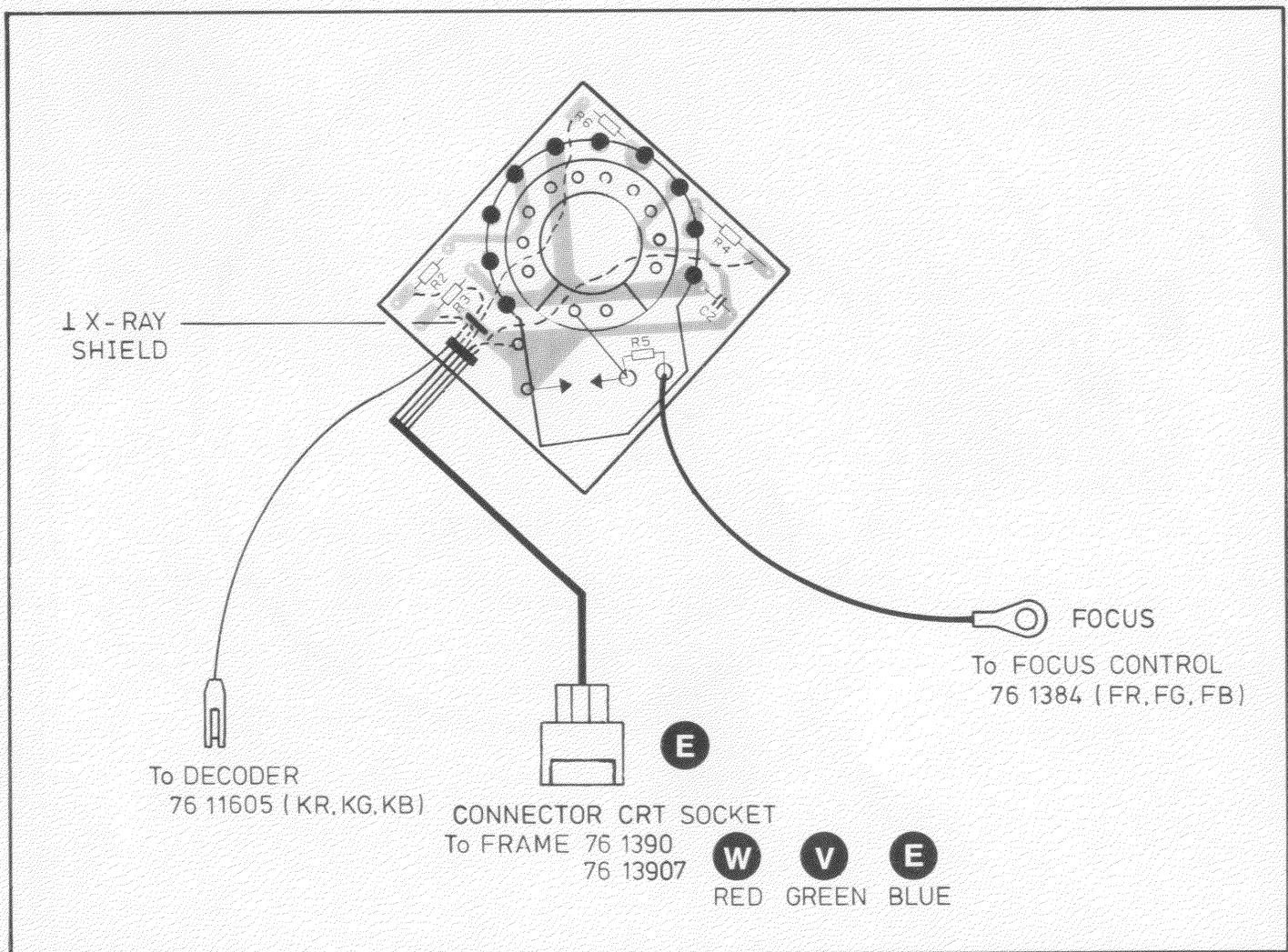
BARCO DATA

BARCO RETRO

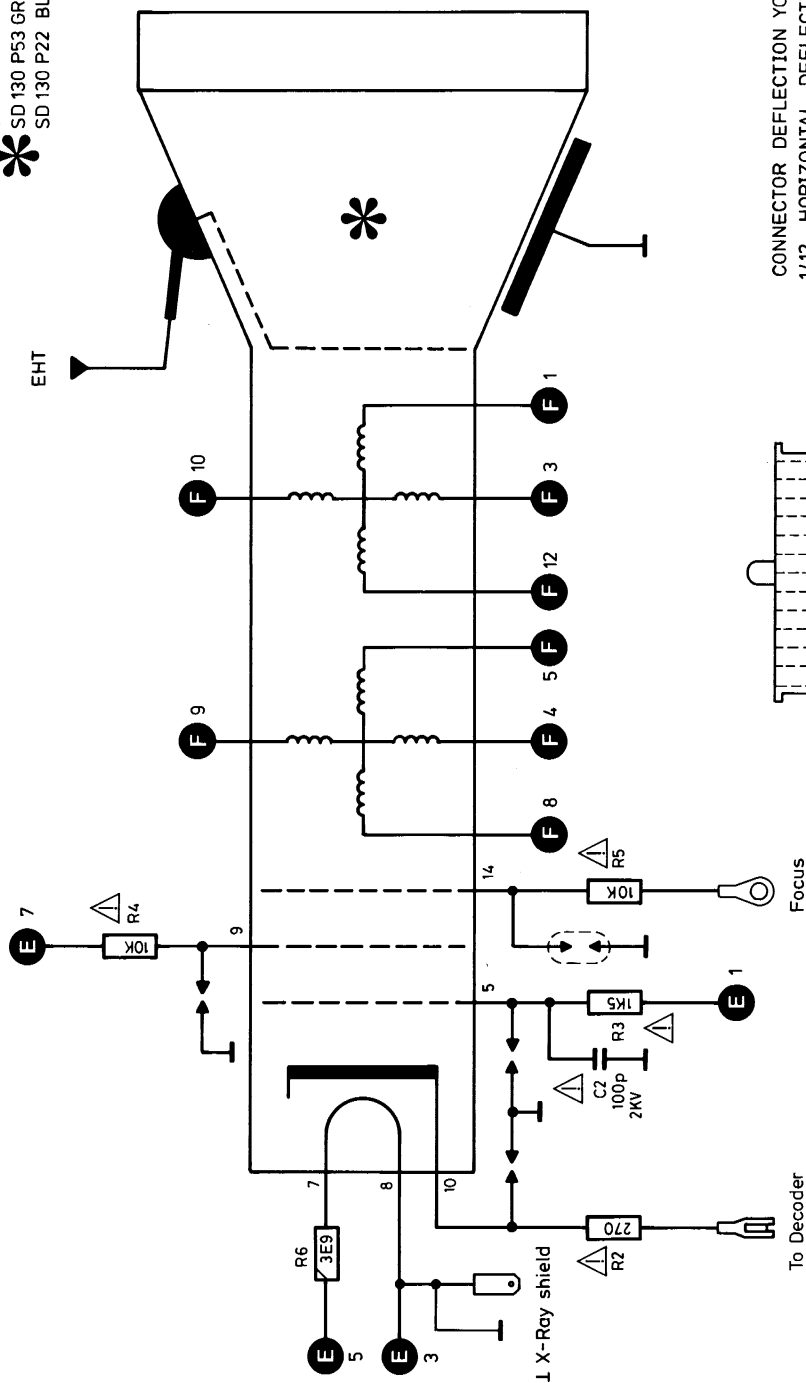
76 13882
76 13885
76 13886

76 13812
76 13815
76 13816

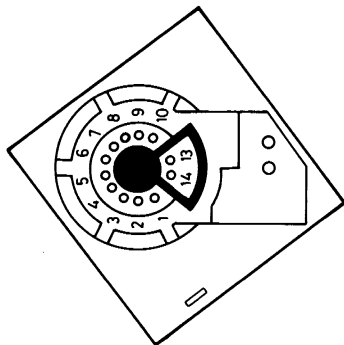




* SD 130 P22 RED : 13 1087
SD 130 P53 GREEN : 13 1089
SD 130 P22 BLUE : 13 1088

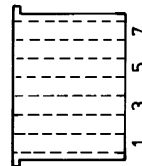


Top view



76 13882 CRT SOCKET RED
76 13885 CRT SOCKET GREEN
76 13886 CRT SOCKET BLUE

To Frame 76 1390
To Frame 76 13907
CONNECTOR CRT SOCKET
1. G1
3. I
5. H
7. G2



CONNECTOR DEFLECTION YOKE
1/12 HORIZONTAL DEFLECTION COILS
3/10 VERTICAL DEFLECTION COILS
5/8 HORIZONTAL CONVERGENCE COILS
4/9 VERTICAL CONVERGENCE COILS

To Frame 76 1390
To Frame 76 13907

RED
GREEN
BLUE

PRODUCT SAFETY NOTICE

COMPONENTS MARKED WITH OR * HAVE SPECIAL CHARACTERISTICS IMPORTANT TO SAFETY. BEFORE REPLACING ANY OF THESE COMPONENTS, READ CAREFULLY THE SERVICE SAFETY PRECAUTIONS.
DO NOT DEGRADE THE SAFETY OF THIS SET THROUGH IMPROPER SERVICING.

E INTERCONNECTION

MODIFICATIONS RESERVED

Name CRT SOCKET		Article nr. 76 1388-	
Date 8/11/85	Drawn PG	Checked CD	
BARCO Electronic		Noordlaan, 5 8720 Kuurne - Belgium	

PARTS LISTING - UNIT CRT SOC R S43
(D850822)

76 13882

ITEM NO.	SIT.	DESCRIPTION	ITEM NO.	SIT.	DESCRIPTION
11 20902	C..2	CAPACITOR CE DI 100P K 2000	10 2148	R..4	RESISTOR CC 10K K 1W
71 6210	PC..	PC CRT - 7613812 RETRO	10 2148	R..5	RESISTOR CC 10K K 1W
10 2129	R..2	RESISTOR CC 270E K 1W	10 1207	R..6	RESISTOR CF 3E9 J 0W50
10 2138	R..3	RESISTOR CC 1K5 K 1W	31 3454	001.	CONNECTOR TAP MOBTE P 1,187
			31 1036	002.	TUBE SOCKET SD-130

PARTS LISTING - UNIT CRT SOC G S43
(D850822)

76 13885

ITEM NO.	SIT.	DESCRIPTION	ITEM NO.	SIT.	DESCRIPTION
11 20902	C..2	CAPACITOR CE DI 100P K 2000	10 2148	R..4	RESISTOR CC 10K K 1W
71 6210	PC..	PC CRT - 7613812 RETRO	10 2148	R..5	RESISTOR CC 10K K 1W
10 2129	R..2	RESISTOR CC 270E K 1W	10 1207	R..6	RESISTOR CF 3E9 J 0W50
10 2138	R..3	RESISTOR CC 1K5 K 1W	31 3454	001.	CONNECTOR TAP MOBTE P 1,187
			31 1036	002.	TUBE SOCKET SD-130

PARTS LISTING - UNIT CRT SOC B S43
(D850822)

76 13886

ITEM NO.	SIT.	DESCRIPTION	ITEM NO.	SIT.	DESCRIPTION
11 20902	C..2	CAPACITOR CE DI 100P K 2000	10 2148	R..4	RESISTOR CC 10K K 1W
71 6210	PC..	PC CRT - 7613812 RETRO	10 2148	R..5	RESISTOR CC 10K K 1W
10 2129	R..2	RESISTOR CC 270E K 1W	10 1207	R..6	RESISTOR CF 3E9 J 0W50
10 2138	R..3	RESISTOR CC 1K5 K 1W	31 3454	001.	CONNECTOR TAP MOBTE P 1,187
			31 1036	002.	TUBE SOCKET SD-130

PARTS LISTING - UNIT CRT R
(D851125)

76 13872

ITEM NO. -----	SIT. -----	DESCRIPTION -----
13 1087		PICTURE TUBE SD130 P22 RED
13 2096		CORD SPLITTER 18
39 5145		GLUE D C 3145RTV

PARTS LISTING - UNIT CRT G
(D851125)

76 13875

ITEM NO. -----	SIT. -----	DESCRIPTION -----
13 1089		PICTURE TUBE SD130 P53 GREEN
13 2094		CORD SPLITTER 11
39 5145		GLUE D C 3145RTV

PARTS LISTING - UNIT CRT B
(D851125)

76 13876

ITEM NO. -----	SIT. -----	DESCRIPTION -----
13 1088		PICTURE TUBE SD130 P22 BLUE
13 2094		CORD SPLITTER 11
39 5145		GLUE D C 3145RTV

